

**TRAY AND RACK DISPENSER SERIE** **DI-TRD**

**SPECIFICATIONS:**

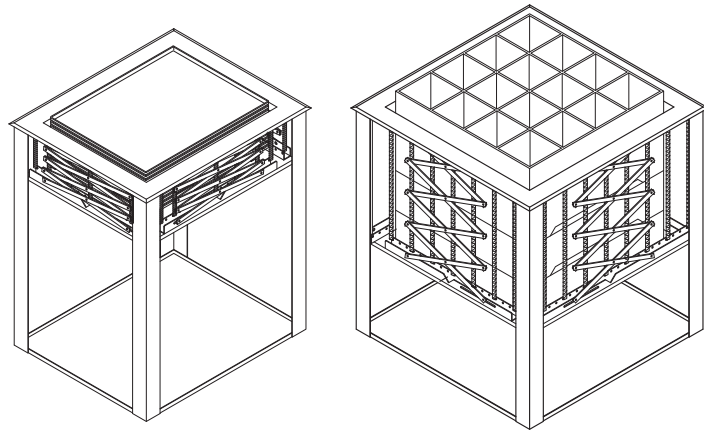
Stainless steel 304 # 4 finish on all exterior surfaces  
Spring bank mechanism

**APPLICATIONS:**

Cafeterias  
Serving lines  
Serving stations

**OPTIONAL EQUIPMENT:**

Unit enclosed all around



HEIGHT FROM MOUNTING SURFACE TO BOTTOM OF UNIT IS 27" / 686mm  
OTHER SIZES AVAILABLE UPON REQUEST

MODEL NUMBER	DI-TRD 1020	DI-TRD 1216	DI-TRD 1219	DI-TRD 1418	DI-TRD 1321	DI-TRD 1520	DI-TRD 1620	DI-TRD 1622	DI-TRD 1826	DI-TRD 2020
<b>TRAY AND RACK SIZE</b> Inch / mm	10" x 20" 254 x 508mm	12" x 16" 305 x 406mm	12" x 19" 305 x 483mm	14" x 18" 356 x 457mm	13" x 21" 330 x 534mm	15" x 20" 381 x 508mm	16" x 20" 407 x 508mm	16" x 22" 407 x 559mm	18" x 26" 457 x 660mm	20" x 20" 508 x 508mm
<b>OVERALL WIDTH</b> Inch / mm	16.00" 406mm	18.00" 457mm	18.00" 457mm	20.00" 508mm	19.00" 483mm	21.00" 534mm	22.00" 559mm	22.00" 559mm	24.00" 610mm	26.00" 660mm
<b>OVERALL DEPTH</b> Inch / mm	26.00" 660mm	22.00" 559mm	25.00" 635mm	24.00" 610mm	27.00" 686mm	26.00" 660mm	26.00" 660mm	28.00" 711mm	32.00" 813mm	26.00" 660mm
<b>COUNTER CUTOUT</b> WIDTH / DEPTH	14.5" x 24.5" 368 x 622mm	16.5" x 20.5" 419 x 521mm	16.5" x 23.5" 419 x 597mm	18.5" x 22.5" 470 x 572mm	17.5" x 25.5" 445 x 648mm	19.5" x 24.5" 495 x 622mm	20.5" x 24.5" 521 x 622mm	20.5" x 26.5" 521 x 673mm	22.5" x 30.5" 572 x 775mm	24.5" x 24.5" 622 x 622mm
<b>SHIPPING WHEIGHT</b> Lbs. / Kg	37 Lbs. 14.5 Kg	37 Lbs. 14.5 Kg	39 Lbs. 17.7 Kg	39 Lbs. 17.7 Kg	40 Lbs. 18.1 Kg	40 Lbs. 18.1 Kg	40 Lbs. 18.1 Kg	40 Lbs. 18.1 Kg	42 Lbs. 19 Kg	42 Lbs. 19 Kg

